

**MEDICATION GUIDE**  
**CONCERTA® (kon SER-ta)**  
**(methylphenidate HCl)**  
**Extended-Release Tablets, CII**

**What is the most important information I should know about CONCERTA?**

**CONCERTA may cause serious side effects, including:**

- **Abuse, misuse, and addiction.** CONCERTA has a high chance for abuse and misuse and may lead to substance use problems, including addiction. Misuse and abuse of CONCERTA, other methylphenidate containing medicines, and amphetamine containing medicines, can lead to overdose and death. The risk of overdose and death is increased with higher doses of CONCERTA or when it is used in ways that are not approved, such as snorting or injection.
  - Your healthcare provider should check you or your child's risk for abuse, misuse, and addiction before starting treatment with CONCERTA and will monitor you or your child during treatment.
  - CONCERTA may lead to physical dependence after prolonged use, even if taken as directed by your healthcare provider.
  - Do not give CONCERTA to anyone else. See **"What is CONCERTA?"** for more information.
  - Keep CONCERTA in a safe place and properly dispose of any unused medicine. See **"How should I store CONCERTA?"** for more information.
  - Tell your healthcare provider if you or your child have ever abused or been dependent on alcohol, prescription medicines, or street drugs.
- **Risks for people with serious heart disease.** Sudden death has happened in people who have heart defects or other serious heart disease.

Your healthcare provider should check you or your child carefully for heart problems before starting treatment with CONCERTA. Tell your healthcare provider if you or your child have any heart problems, heart disease, or heart defects.

**Call your healthcare provider or go to the nearest hospital emergency room right away if you or your child have any signs of heart problems such as chest pain, shortness of breath, or fainting during treatment with CONCERTA.**

- **Increased blood pressure and heart rate.**

Your healthcare provider should check your or your child's blood pressure and heart rate regularly during treatment with CONCERTA.
- **Mental (psychiatric) problems, including:**
  - new or worse behavior or thought problems
  - new or worse bipolar illness
  - new psychotic symptoms (such as hearing voices, or seeing or believing things that are not real) or new manic symptoms

Tell your healthcare provider about any mental problems you or your child have, or about a family history of suicide, bipolar illness, or depression.

**Call your healthcare provider right away if you or your child have any new or worsening mental symptoms or problems during treatment with CONCERTA, especially hearing voices, seeing or believing things that are not real, or new manic symptoms.**

**What is CONCERTA?**

CONCERTA is a central nervous system (CNS) stimulant prescription medicine used for the treatment of Attention Deficit and Hyperactivity Disorder (ADHD) in children 6 years of age and older and adults up to 65 years of age. CONCERTA may help increase attention and decrease impulsiveness and hyperactivity in people with ADHD.

It is not known if CONCERTA is safe and effective in children under 6 years of age.

CONCERTA has not been studied in adults older than 65 years of age.

**CONCERTA is a federally controlled substance (CII) because it contains methylphenidate that can be a target for people who abuse prescription medicines or street drugs.** Keep CONCERTA in a safe place to protect it from theft. Never give your CONCERTA to anyone else because it may cause death or harm them. Selling or giving away CONCERTA may harm others and is against the law.

**Do not take CONCERTA if you or your child:**

- are allergic to methylphenidate or any of the ingredients in CONCERTA. See the end of this Medication Guide for a complete list of ingredients in CONCERTA.
- are taking, or have stopped taking within the past 14 days, a medicine called monoamine oxidase inhibitor (MAOI)

**Before taking CONCERTA, tell your healthcare provider about all of your or your child's medical conditions, including if you or your child:**

- have heart problems, heart disease, heart defects, or high blood pressure
- have mental problems including psychosis, mania, bipolar illness, or depression, or have a family history of suicide, bipolar illness, or depression
- have or have had seizures or have had an abnormal brain wave test (EEG)
- have circulation problems in fingers and toes
- have had a blockage or narrowing of the intestines
- have eye problems, including increased pressure in your eye, glaucoma, or problems with your close-up vision (farsightedness)
- have or had repeated movements or sounds (tics) or Tourette's syndrome, or have a family history of tics or Tourette's syndrome
- are pregnant or plan to become pregnant. It is not known if CONCERTA will harm the unborn baby.
- are breastfeeding or plan to breastfeed. It is not known if CONCERTA passes into the breastmilk. Talk to your healthcare provider about the best way to feed the baby during treatment with CONCERTA.

**Tell your healthcare provider about all of the medicines that you or your child take**, including prescription and over-the-counter medicines, vitamins, and herbal supplements.

CONCERTA and some medicines may interact with each other and cause serious side effects. Sometimes the doses of other medicines will need to be changed during treatment with CONCERTA. Your healthcare provider will decide whether CONCERTA can be taken with other medicines.

**Especially tell your healthcare provider if you or your child take:**

- a medicine to treat blood pressure
- coumarin anticoagulants (a medicine that prevent blood clots, such as warfarin)
- a medicine to treat seizures
- a medicine to treat depression
- risperidone

Know the medicines that you or your child take. Keep a list of your or your child's medicines with you to show your healthcare provider and pharmacist when you or your child get a new medicine.

**Do not start any new medicine during treatment with CONCERTA without first talking to your healthcare provider.**

**How should CONCERTA be taken?**

- Take CONCERTA exactly as prescribed by your or your child's healthcare provider.
- Your healthcare provider may change the dose or tell you to stop taking CONCERTA if needed.
- Take CONCERTA 1 time each day in the morning with or without food.
- Swallow CONCERTA tablets whole with water or other liquids. **Do not chew, crush, or divide the tablets.** Tell your healthcare provider if you or your child cannot swallow CONCERTA tablets whole. A different medicine may need to be prescribed.
- CONCERTA does not dissolve completely in the body after all the medicine has been released. You or your child may sometimes notice the empty tablet in a bowel movement. This is normal.

- Your healthcare provider may do blood tests during treatment with CONCERTA to check your or your child's blood count.

If you or your child take too much CONCERTA, call your healthcare provider or go to the nearest hospital emergency room right away.

#### **Concerta® contains lactose**

This medicine contains lactose (a type of sugar). If you or your child have been told by your doctor that you or your child has an intolerance to some sugars, contact your doctor before taking this medicine.

#### **What are the possible side effects of CONCERTA?**

**CONCERTA may cause serious side effects, including:**

- See “What is the most important information I should know about CONCERTA?”
- **Seizures.** Your healthcare provider will stop treatment with CONCERTA if you or your child have a seizure.
- **Painful and prolonged erections (priapism).** Priapism that may require surgery has happened in people who take products that contain methylphenidate. **If you or your child develop priapism, get medical help right away.**
- **Circulation problems in fingers and toes (peripheral vasculopathy, including Raynaud's phenomenon).** Signs and symptoms may include:
  - fingers or toes may feel numb, cool, painful
  - fingers or toes may change color from pale, to blue, to red
 Tell your healthcare provider if you or your child have any numbness, pain, skin color change, or sensitivity to temperature in your fingers or toes.
 

**Call your healthcare provider right away if you or your child have any signs of unexplained wounds appearing on fingers or toes during treatment with CONCERTA.**
- **Slowing of growth (height and weight) in children.** Children should have their height and weight checked often during treatment with CONCERTA. CONCERTA treatment may be stopped if your child is not growing or gaining weight as expected.
- **Eye problems (increased pressure in the eye and glaucoma).** Call your healthcare provider right away if you or your child develop changes in your vision or eye pain, swelling, or redness.
- **New or worsening tics or worsening Tourette's syndrome.** Tell your healthcare provider if you or your child get any new or worsening tics or worsening Tourette's syndrome during treatment with CONCERTA.
- **Eyesight changes or blurred vision.**
- **Possible blockage of the intestine.** Because the CONCERTA tablet does not change in shape in the intestines (GI tract), CONCERTA should not be taken by people with severe intestinal problems (preexisting severe gastrointestinal narrowing).

**The most common side effect of CONCERTA in children is upper stomach-area (abdominal) pain.**

**The most common side effects of CONCERTA in adults include:**

- |                      |                      |
|----------------------|----------------------|
| • decreased appetite | • anxiety            |
| • headache           | • dizziness          |
| • dry mouth          | • weight loss        |
| • nausea             | • irritability       |
| • trouble sleeping   | • increased sweating |

These are not all the possible side effects of CONCERTA.

Call your doctor for medical advice about side effects.

#### **How should I store CONCERTA?**

- Do not Store above 30 °C & protect from moisture.
- Shelf life: See outer pack
- Store CONCERTA in a safe place, like a locked cabinet.
- Dispose of remaining, unused, or expired CONCERTA by a medicine take-back program at a U.S. Drug Enforcement Administration (DEA) authorized collection site. If no take-back program or DEA authorized collector is available, mix CONCERTA with an undesirable, nontoxic substance such as dirt, cat litter, or used

coffee grounds to make it less appealing to children and pets. Place the mixture in a container such as a sealed plastic bag and throw away CONCERTA in the household trash. Visit [www.fda.gov/drugdisposal](http://www.fda.gov/drugdisposal) for additional information on disposal of unused medicines.

Keep CONCERTA and all medicines out of the reach of children.

**General information about the safe and effective use of CONCERTA.**

Medicines are sometimes prescribed for purposes other than those listed in a Medication Guide. Do not use CONCERTA for a condition for which it was not prescribed. Do not give CONCERTA to other people, even if they have the same condition. It may harm them and it is against the law.

You can ask your healthcare provider or pharmacist for information about CONCERTA that is written for healthcare professionals.

**What are the ingredients in CONCERTA?**

**Active ingredient:** methylphenidate hydrochloride

**Inactive ingredients:** butylated hydroxytoluene, carnauba wax, cellulose acetate, hypromellose, lactose, phosphoric acid, poloxamer, polyethylene glycol, polyethylene oxides, povidone, propylene glycol, sodium chloride, stearic acid, succinic acid, synthetic iron oxides, titanium dioxide, and triacetin

**What Concerta looks like and contents of the pack:**

Extended release tablets

18 mg tablets: Capsule-shaped yellow tablets with “alza 18” printed on one side in black ink. Each tablet contains 18mg of methylphenidate hydrochloride.

27 mg tablets: Capsule-shaped gray tablets with “alza 27” printed on one side in black ink. Each tablet contains 27mg of methylphenidate hydrochloride

36 mg tablets: Capsule-shaped white tablets with “alza 36” printed on one side in black ink. Each tablet contains 36mg of methylphenidate hydrochloride

54 mg tablets: Capsule-shaped brownish-red tablets with “alza 54” printed on one side in black ink. Each tablet contains 54mg of methylphenidate hydrochloride

**Nature and Contents of Container**

CONCERTA® is available in high-density polyethylene (HDPE) bottles. Each HDPE bottle contains either 30 or 100 tablets, and desiccant.

Not all strengths or pack sizes may be marketed.

**License holder:**

Janssen Pharmaceuticals, Inc., 1125 Trenton-Harbourton Road, Titusville, NJ 08560 United States of America

**Manufactured by:**

Janssen-Cilag Manufacturing, LLC, State Road 933, KM 0.1, Mamey Ward, Gurabo, Puerto RICO 00778-9629, United States of America

**Revised in:** October 2023

**To contact us, go to** [www.janssen.com/contact-us](http://www.janssen.com/contact-us)

© 2008 Janssen Pharmaceuticals, Inc.

### **THIS IS A MEDICAMENT**

- Medicament is a product which affects your health and its consumption contrary to instructions is dangerous for you.
- Follow strictly the doctor's prescription, the method of use and the instructions of the pharmacist who sold the medicament. The doctor and the pharmacist are the experts in medicines, their benefits and risks.
- Do not by yourself interrupt the period of treatment prescribed.
- Do not repeat the same prescription without consulting your doctor.
- Keep all medicaments out of the reach of children

**Council of Arab Health Ministers, Union of Arab Pharmacists**

## HIGHLIGHTS OF PRESCRIBING INFORMATION

These highlights do not include all the information needed to use CONCERTA safely and effectively. See full prescribing information for CONCERTA.

CONCERTA® (methylphenidate HCl) Extended-Release Tablets CII  
Initial U.S. Approval: 2000

### WARNING: ABUSE, MISUSE, AND ADDICTION

*See full prescribing information for complete boxed warning.*

CONCERTA has a high potential for abuse and misuse, which can lead to the development of a substance use disorder, including addiction. Misuse and abuse of CNS stimulants, including CONCERTA, can result in overdose and death (5.1, 9.2, 10):

- Before prescribing CONCERTA, assess each patient's risk for abuse, misuse, and addiction.
- Educate patients and their families about these risks, proper storage of the drug, and proper disposal of any unused drug.
- Throughout treatment, reassess each patient's risk and frequently monitor for signs and symptoms of abuse, misuse, and addiction.

### RECENT MAJOR CHANGES

Boxed Warning	10/2023
Indications and Usage (1)	10/2023
Dosage and Administration (2.1, 2.6)	10/2023
Dosage and Administration, Maintenance/Extended Treatment (2.5)	Removed
Contraindications (4)	10/2023
Warnings and Precautions (5.1, 5.2, 5.3, 5.4, 5.6, 5.7, 5.8, 5.11, 5.12, 5.13)	10/2023
Warnings and Precautions (5.7)	Removed

### INDICATIONS AND USAGE

CONCERTA is a CNS stimulant indicated for the treatment of Attention Deficit Hyperactivity Disorder (ADHD) in children 6 years of age and older, adolescents, and adults up to the age of 65. (1)

### DOSAGE AND ADMINISTRATION

- CONCERTA should be taken once daily in the morning and swallowed whole with the aid of liquids. CONCERTA should not be chewed or crushed. CONCERTA may be taken with or without food. (2.2)
- For children and adolescents new to methylphenidate, the recommended starting dosage is 18 mg once daily. Dosage may be increased by 18 mg/day at weekly intervals and should not exceed 54 mg/day in children and 72 mg/day in adolescents. (2.3)
- For adult patients new to methylphenidate, the recommended starting dose is 18 or 36 mg/day. Dosage may be increased by 18 mg/day at weekly intervals and should not exceed 72 mg/day for adults. (2.3)
- For patients currently using methylphenidate, dosing is based on current dose regimen and clinical judgment. (2.4)

### DOSAGE FORMS AND STRENGTHS

Tablets: 18, 27, 36, and 54 mg (3)

### CONTRAINDICATIONS

- Known hypersensitivity to the product (4.1)
- Do not use CONCERTA in patients currently using or within 2 weeks of using an MAO inhibitor (4.2)

### WARNINGS AND PRECAUTIONS

- Risks to Patients with Serious Cardiac Disease: Avoid in patients with known structural cardiac abnormalities, cardiomyopathy, serious cardiac arrhythmias, coronary artery disease, or other serious cardiac disease. (5.2)
- Increase in Blood Pressure and Heart Rate: Monitor blood pressure and pulse. (5.3)
- Psychiatric Adverse Reactions: Prior to initiating CONCERTA, screen patients for risk factors for developing a manic episode. If new psychotic or manic symptoms occur, consider discontinuing CONCERTA. (5.4)
- Seizures: Stimulants may lower the convulsive threshold. Discontinue in the presence of seizures. (5.5)
- Priapism: If abnormally sustained or frequent and painful erections occur, patients should seek immediate medical attention. (5.6)
- Peripheral Vasculopathy, including Raynaud's Phenomenon: Careful observation for digital changes is necessary during CONCERTA treatment. Further clinical evaluation (e.g., rheumatology referral) may be appropriate for patients who develop signs or symptoms of peripheral vasculopathy (5.7)
- Long-Term Suppression of Growth in Pediatric Patients: Closely monitor growth (height and weight) in pediatric patients. Pediatric patients not growing or gaining height or weight as expected may need to have their treatment interrupted. (5.8)
- Gastrointestinal obstruction with preexisting GI narrowing. (5.9)
- Hematologic monitoring: Periodic CBC, differential, and platelet counts are advised during prolonged therapy. (5.10)
- Acute Angle Closure Glaucoma: CONCERTA -treated patients considered at risk for acute angle closure glaucoma (e.g., patients with significant hyperopia) should be evaluated by an ophthalmologist. (5.11)
- Increased Intraocular Pressure and Glaucoma: Prescribe CONCERTA to patients with open-angle glaucoma or abnormally increased IOP only if the benefit of treatment is considered to outweigh the risk. Closely monitor patients with a history of increased IOP or open angle glaucoma. (5.12)
- Motor and Verbal Tics, and Worsening of Tourette's Syndrome: Before initiating CONCERTA, assess the family history and clinically evaluate patients for tics or Tourette's syndrome. Regularly monitor patients for the emergence or worsening of tics or Tourette's syndrome. Discontinue treatment if clinically appropriate. (5.13)

### ADVERSE REACTIONS

The most common adverse reaction in double-blind clinical trials (>5%) in children and adolescents was abdominal pain upper. The most common adverse reactions in double-blind clinical trials (>5%) in adult patients were decreased appetite, headache, dry mouth, nausea, insomnia, anxiety, dizziness, weight decreased, irritability, and hyperhidrosis. (6.1 and 6.2)

The most common adverse reactions associated with discontinuation ( $\geq 1\%$ ) from either pediatric or adult clinical trials were anxiety, irritability, insomnia, and blood pressure increased. (6.3)

### DRUG INTERACTIONS

- CONCERTA may increase blood pressure; use cautiously with vasopressors (7.2)
- Inhibition of metabolism of coumarin anticoagulants, anticonvulsants, and some antidepressants (7.3)

### USE IN SPECIFIC POPULATIONS

- Caution should be exercised if administered to nursing mothers (8.3)
- Safety and efficacy has not been established in children less than six years old or elderly patients greater than 65 years of age (8.4 and 8.5)

See 17 for PATIENT COUNSELING INFORMATION and FDA  
APPROVED MEDICATION GUIDE.

Revised: 10/2023

## FULL PRESCRIBING INFORMATION: CONTENTS\*

### WARNING: ABUSE, MISUSE, AND ADDICTION

#### 1 INDICATIONS AND USAGE

#### 2 DOSAGE AND ADMINISTRATION

- 2.1 Pretreatment Screening
- 2.2 Recommended Dosage
- 2.3 Patients New to Methylphenidate
- 2.4 Patients Currently Using Methylphenidate
- 2.5 Dose Titration
- 2.6 Dosage Reduction and Discontinuation

#### 3 DOSAGE FORMS AND STRENGTHS

#### 4 CONTRAINDICATIONS

- 4.1 Hypersensitivity to Methylphenidate
- 4.2 Monoamine Oxidase Inhibitors

#### 5 WARNINGS AND PRECAUTIONS

- 5.1 Abuse, Misuse, and Addiction
- 5.2 Risks to Patients with Serious Cardiac Disease
- 5.3 Increased Blood Pressure and Heart Rate
- 5.4 Psychiatric Adverse Reactions
- 5.5 Seizures
- 5.6 Priapism
- 5.7 Peripheral Vasculopathy, including Raynaud's Phenomenon
- 5.8 Long-Term Suppression of Growth in Pediatric Patients
- 5.9 Potential for Gastrointestinal Obstruction
- 5.10 Hematologic Monitoring
- 5.11 Acute Angle Closure Glaucoma
- 5.12 Increased Intraocular Pressure and Glaucoma
- 5.13 Motor and Verbal Tics, and Worsening of Tourette's Syndrome

#### 6 ADVERSE REACTIONS

- 6.1 Commonly Observed Adverse Reactions in Double-Blind, Placebo-Controlled Clinical Trials
- 6.2 Other Adverse Reactions Observed in CONCERTA Clinical Trials
- 6.3 Discontinuation Due to Adverse Reactions
- 6.4 Blood Pressure and Heart Rate Increases

- 6.5 Postmarketing Experience

#### 7 DRUG INTERACTIONS

- 7.1 MAO Inhibitors
- 7.2 Vasopressor Agents
- 7.3 Coumarin Anticoagulants, Antidepressants, and Selective Serotonin Reuptake Inhibitors
- 7.4 Halogenated Anesthetics
- 7.5 Risperidone

#### 8 USE IN SPECIFIC POPULATIONS

- 8.1 Pregnancy
- 8.2 Labor and Delivery
- 8.3 Nursing Mothers
- 8.4 Pediatric Use
- 8.5 Geriatric Use

#### 9 DRUG ABUSE AND DEPENDENCE

- 9.1 Controlled Substance
- 9.2 Abuse
- 9.3 Dependence

#### 10 OVERDOSAGE

- 10.1 Clinical Effects of Overdose
- 10.2 Overdose Management

#### 11 DESCRIPTION

- 11.1 System Components and Performance

#### 12 CLINICAL PHARMACOLOGY

- 12.1 Mechanism of Action
- 12.2 Pharmacodynamics
- 12.3 Pharmacokinetics

#### 13 NONCLINICAL TOXICOLOGY

- 13.1 Carcinogenesis, Mutagenesis, and Impairment of Fertility

#### 14 CLINICAL STUDIES

- 14.1 Children
- 14.2 Adolescents
- 14.3 Adults

#### 16 HOW SUPPLIED/STORAGE AND HANDLING

#### 17 PATIENT COUNSELING INFORMATION

\*Sections or subsections omitted from the full prescribing information are not listed.

## FULL PRESCRIBING INFORMATION

### **WARNING: ABUSE, MISUSE, AND ADDICTION**

CONCERTA has a high potential for abuse and misuse, which can lead to the development of a substance use disorder, including addiction. Misuse and abuse of CNS stimulants, including CONCERTA, can result in overdose and death [see *Overdosage (10)*], and this risk is increased with higher doses or unapproved methods of administration, such as snorting or injection.

Before prescribing CONCERTA, assess each patient's risk for abuse, misuse, and addiction. Educate patients and their families about these risks, proper storage of the drug, and proper disposal of any unused drug. Throughout CONCERTA treatment, reassess each patient's risk of abuse, misuse, and addiction and frequently monitor for signs and symptoms of abuse, misuse, and addiction [see *Warnings and Precautions (5.1)* and *Drug Abuse and Dependence (9.2)*].

### **1 INDICATIONS AND USAGE**

CONCERTA is indicated for the treatment of Attention Deficit Hyperactivity Disorder (ADHD) in children 6 years of age and older, adolescents, and adults up to the age of 65 [see *Clinical Studies (14)*].

### **2 DOSAGE AND ADMINISTRATION**

#### **2.1 Pretreatment Screening**

Prior to treating patients with CONCERTA, assess:

- for the presence of cardiac disease (i.e., perform a careful history, family history of sudden death or ventricular arrhythmia, and physical exam) [see *Warnings and Precautions (5.2)*].
- the family history and clinically evaluate patients for motor or verbal tics or Tourette's syndrome before initiating CONCERTA [see *Warnings and Precautions (5.13)*].

#### **2.2 Recommended Dosage**

CONCERTA should be administered orally once daily in the morning with or without food.

CONCERTA must be swallowed whole with the aid of liquids, and must not be chewed, divided, or crushed [see *Patient Counseling Information (17)*].

#### **2.3 Patients New to Methylphenidate**

The recommended starting dose of CONCERTA for patients who are not currently taking methylphenidate or stimulants other than methylphenidate is 18 mg once daily for children and adolescents and 18 or 36 mg once daily for adults (see Table 1).



**Table 1. CONCERTA Recommended Starting Doses and Dose Ranges**

<b>Patient Age</b>	<b>Recommended Starting Dose</b>	<b>Dose Range</b>
Children 6-12 years of age	18 mg/day	18 mg - 54 mg/day
Adolescents 13-17 years of age	18 mg/day	18 mg - 72 mg/day not to exceed 2 mg/kg/day
Adults 18-65 years of age	18 or 36 mg/day	18 mg - 72 mg/day

## 2.4 Patients Currently Using Methylphenidate

The recommended dose of CONCERTA for patients who are currently taking methylphenidate twice daily or three times daily at doses of 10 to 60 mg/day is provided in Table 2. Dosing recommendations are based on current dose regimen and clinical judgment. Conversion dosage should not exceed 72 mg daily.

**Table 2. Recommended Dose Conversion from Methylphenidate Regimens to CONCERTA**

<b>Previous Methylphenidate Daily Dose</b>	<b>Recommended CONCERTA® Starting Dose</b>
5 mg Methylphenidate twice daily or three times daily	18 mg every morning
10 mg Methylphenidate twice daily or three times daily	36 mg every morning
15 mg Methylphenidate twice daily or three times daily	54 mg every morning
20 mg Methylphenidate twice daily or three times daily	72 mg every morning

Other methylphenidate regimens: Clinical judgment should be used when selecting the starting dose.

## 2.5 Dose Titration

Doses may be increased in 18 mg increments at weekly intervals for patients who have not achieved an optimal response at a lower dose. Daily dosages above 54 mg in children and 72 mg in adolescents have not been studied and are not recommended. Daily dosages above 72 mg in adults are not recommended.

A 27 mg dosage strength is available for physicians who wish to prescribe between the 18 mg and 36 mg dosages.

## 2.6 Dosage Reduction and Discontinuation

If paradoxical aggravation of symptoms or other adverse reactions occur, reduce dosage or, if necessary, discontinue CONCERTA.

If improvement is not observed after appropriate dosage adjustment over a one-month period, discontinue CONCERTA.

## 3 DOSAGE FORMS AND STRENGTHS

CONCERTA (methylphenidate HCl) Extended-Release Tablets are available in the following dosage strengths: 18 mg tablets are yellow and imprinted with “alza 18,” 27 mg

tablets are gray and imprinted with “alza 27,” 36 mg tablets are white and imprinted with “alza 36,” and 54 mg tablets are brownish-red and imprinted with “alza 54.”

## **4 CONTRAINDICATIONS**

### **4.1 Hypersensitivity to Methylphenidate**

Hypersensitivity reactions, such as angioedema and anaphylactic reactions, have been observed in patients treated with CONCERTA. Therefore, CONCERTA is contraindicated in patients known to be hypersensitive to methylphenidate or other components of the product [*see Adverse Reactions (6.5)*].

### **4.2 Monoamine Oxidase Inhibitors**

CONCERTA is contraindicated during treatment with monoamine oxidase (MAO) inhibitors, and also within a minimum of 14 days following discontinuation of a MAO inhibitor (hypertensive crises may result) [*see Drug Interactions (7.1)*].

## **5 WARNINGS AND PRECAUTIONS**

### **5.1 Abuse, Misuse, and Addiction**

CONCERTA has a high potential for abuse and misuse. The use of CONCERTA exposes individuals to the risks of abuse and misuse, which can lead to the development of a substance use disorder, including addiction. CONCERTA can be diverted for non-medical use into illicit channels or distribution [*see Drug Abuse and Dependence (9.2)*]. Misuse and abuse of CNS stimulants, including CONCERTA, can result in overdose and death [*see Overdosage (10)*], and this risk is increased with higher doses or unapproved methods of administration, such as snorting or injection.

Before prescribing CONCERTA, assess each patient’s risk for abuse, misuse, and addiction. Educate patients and their families about these risks and proper disposal of any unused drug. Advise patients to store CONCERTA in a safe place, preferably locked, and instruct patients to not give CONCERTA to anyone else. Throughout CONCERTA treatment, reassess each patient’s risk of abuse, misuse, and addiction and frequently monitor for signs and symptoms of abuse, misuse, and addiction.

### **5.2 Risks to Patients with Serious Cardiac Disease**

Sudden death has been reported in patients with structural cardiac abnormalities or other serious cardiac disease who were treated with CNS stimulants at the recommended ADHD dosage.

Avoid CONCERTA use in patients with known structural cardiac abnormalities, cardiomyopathy, serious cardiac arrhythmia, coronary artery disease, or other serious cardiac disease.

### **5.3 Increased Blood Pressure and Heart Rate**

CNS stimulants may cause an increase in blood pressure (mean increase approximately 2 to 4 mmHg) and heart rate (mean increase approximately 3 to 6 bpm). Some patients may have larger increases.

Monitor all CONCERTA-treated patients for hypertension and tachycardia.

### **5.4 Psychiatric Adverse Reactions**

#### **Exacerbation of Pre-existing Psychosis**

CNS stimulants may exacerbate symptoms of behavior disturbance and thought disorder in patients with a pre-existing psychotic disorder.

#### **Induction of a Manic Episode in Patients with Bipolar Disorder**

CNS stimulants may induce a manic or mixed episode in patients. Prior to initiating CONCERTA treatment, screen patients for risk factors for developing a manic episode (e.g., comorbid or history of depressive symptoms or a family history of suicide, bipolar disorder, or depression).

#### **New Psychotic or Manic Symptoms**

CNS stimulants, at the recommended dosage, may cause psychotic or manic symptoms (e.g., hallucinations, delusional thinking, or mania) in patients without a prior history of psychotic illness or mania. In a pooled analysis of multiple short-term, placebo-controlled studies of CNS stimulants, psychotic or manic symptoms occurred in approximately 0.1% of CNS stimulant-treated patients, compared with 0% of placebo-treated patients. If such symptoms occur, consider discontinuing CONCERTA.

### **5.5 Seizures**

There is some clinical evidence that stimulants may lower the convulsive threshold in patients with prior history of seizures, in patients with prior EEG abnormalities in absence of seizures, and, very rarely, in patients without a history of seizures and no prior EEG evidence of seizures. In the presence of seizures, the drug should be discontinued.

### **5.6 Priapism**

Prolonged and painful erections, sometimes requiring surgical intervention, have been reported with methylphenidate use in both adult and pediatric male patients [*see Adverse Reactions (6.5)*]. Although priapism was not reported with methylphenidate initiation, it developed after some time on methylphenidate, often subsequent to an increase in dosage. Priapism also occurred during methylphenidate withdrawal (drug holidays or during discontinuation).

CONCERTA-treated patients who develop abnormally sustained or frequent and painful erections should seek immediate medical attention.

### **5.7 Peripheral Vasculopathy, including Raynaud's Phenomenon**

CNS stimulants, including CONCERTA, used to treat ADHD are associated with peripheral vasculopathy, including Raynaud's phenomenon. Signs and symptoms are usually intermittent and mild; however, sequelae have included digital ulceration and/or soft tissue breakdown. Effects of peripheral vasculopathy, including Raynaud's phenomenon, were observed in post-marketing reports and at the therapeutic dosages of CNS stimulants in all age groups throughout the course of treatment. Signs and symptoms generally improved after dosage reduction or discontinuation of the CNS stimulant.

Careful observation for digital changes is necessary during CONCERTA treatment. Further clinical evaluation (e.g., rheumatology referral) may be appropriate for CONCERTA-treated patients who develop signs or symptoms of peripheral vasculopathy.

### **5.8 Long-Term Suppression of Growth in Pediatric Patients**

CNS stimulants have been associated with weight loss and slowing of growth rate in pediatric patients. Careful follow-up of weight and height in children ages 7 to 10 years who were randomized to either methylphenidate or nonmedication treatment groups over 14 months, as well as in naturalistic subgroups of newly methylphenidate-treated and nonmedication-treated children over 36 months (to the ages of 10 to 13 years), suggests that pediatric patients who received methylphenidate for 7 days per week throughout the year had a temporary slowing in growth rate (on average, a total of about 2 cm less growth in height and 2.7 kg less growth in weight over 3 years), without evidence of growth rebound during this development period. Closely monitor growth (weight and height) in CONCERTA-treated pediatric patients. Pediatric patients who are not growing or gaining height or weight as expected may need to have their treatment interrupted.

### **5.9 Potential for Gastrointestinal Obstruction**

Because the CONCERTA tablet is nondeformable and does not appreciably change in shape in the GI tract, CONCERTA should not ordinarily be administered to patients with preexisting severe gastrointestinal narrowing (pathologic or iatrogenic, for example: esophageal motility disorders, small bowel inflammatory disease, "short gut" syndrome due to adhesions or decreased transit time, past history of peritonitis, cystic fibrosis, chronic intestinal pseudo-obstruction, or Meckel's diverticulum). There have been rare reports of obstructive symptoms in patients with known strictures in association with the ingestion of drugs in nondeformable controlled-release formulations. Due to the controlled-release design of the tablet, CONCERTA should be used only in patients who are able to swallow the tablet whole [*see Patient Counseling Information (17)*].

### 5.10 Hematologic Monitoring

Periodic CBC, differential, and platelet counts are advised during prolonged therapy.

### 5.11 Acute Angle Closure Glaucoma

There have been rare reports of angle closure glaucoma associated with methylphenidate treatment.

Although the mechanism is not clear, CONCERTA-treated patients considered at risk for acute angle closure glaucoma (e.g., patients with significant hyperopia) should be evaluated by an ophthalmologist.

### 5.12 Increased Intraocular Pressure and Glaucoma

There have been reports of an elevation of intraocular pressure (IOP) associated with methylphenidate treatment [see *Adverse Reactions* (6.5)].

Prescribe CONCERTA to patients with open-angle glaucoma or abnormally increased IOP only if the benefit of treatment is considered to outweigh the risk. Closely monitor CONCERTA-treated patients with a history of abnormally increased IOP or open angle glaucoma.

### 5.13 Motor and Verbal Tics, and Worsening of Tourette's Syndrome

CNS stimulants, including methylphenidate, have been associated with the onset or exacerbation of motor and verbal tics [see *Adverse Reactions* (6.2, 6.5)]. Worsening of Tourette's syndrome has also been reported.

Before initiating CONCERTA, assess the family history and clinically evaluate patients for tics or Tourette's syndrome. Regularly monitor CONCERTA-treated patients for the emergence or worsening of tics or Tourette's syndrome, and discontinue treatment if clinically appropriate.

**5.14 This medicinal product contains lactose:** patients with rare hereditary problems of galactose intolerance, total lactase deficiency or glucose-galactose malabsorption should not take this medicine.

## 6 ADVERSE REACTIONS

The following are discussed in more detail in other sections of the labeling:

- Abuse, Misuse, and Addiction [see *Boxed Warning, Warnings and Precautions* (5.1)]

- Hypersensitivity to Methylphenidate [*see Contraindications (4.1)*]
- Monoamine Oxidase Inhibitors [*see Contraindications (4.2) and Drug Interactions (7.1)*]
- Risks to Patients with Serious Cardiac Disease [*see Warnings and Precautions (5.2)*]
- Increased Blood Pressure and Heart Rate [*see Warnings and Precautions (5.3)*]
- Psychiatric Adverse Reactions [*see Warnings and Precautions (5.4)*]
- Seizures [*see Warnings and Precautions (5.5)*]
- Priapism [*see Warnings and Precautions (5.6)*]
- Peripheral Vasculopathy, including Raynaud's Phenomenon [*see Warnings and Precautions (5.7)*]
- Long-Term Suppression of Growth in Pediatric Patients [*see Warnings and Precautions (5.8)*]
- Potential for Gastrointestinal Obstruction [*see Warnings and Precautions (5.9)*]
- Hematologic Monitoring [*see Warnings and Precautions (5.10)*]
- Acute Angle Closure Glaucoma [*see Warnings and Precautions (5.11)*]
- Increased Intraocular Pressure and Glaucoma [*see Warnings and Precautions (5.12)*]
- Motor and Verbal Tics, and Worsening of Tourette's Syndrome [*see Warnings and Precautions (5.13)*]

The most common adverse reaction in double-blind clinical trials (>5%) in pediatric patients (children and adolescents) was abdominal pain upper. The most common adverse reactions in double-blind clinical trials (>5%) in adult patients were decreased appetite, headache, dry mouth, nausea, insomnia, anxiety, dizziness, weight decreased, irritability, and hyperhidrosis [*see Adverse Reactions (6.1)*].

The most common adverse reactions associated with discontinuation ( $\geq 1\%$ ) from either pediatric or adult clinical trials were anxiety, irritability, insomnia, and blood pressure increased [*see Adverse Reactions (6.3)*].

The development program for CONCERTA included exposures in a total of 3906 participants in clinical trials. Children, adolescents, and adults with ADHD were evaluated in 6 controlled clinical studies and 11 open-label clinical studies (see Table 3). Safety was assessed by collecting adverse events, vital signs, weights, and ECGs, and by performing physical examinations and laboratory analyses.

**Table 3. CONCERTA Exposure in Double-Blind and Open-Label Clinical Studies**

<b>Patient Population</b>	<b>N</b>	<b>Dose Range</b>
Children	2216	18 to 54 mg once daily
Adolescents	502	18 to 72 mg once daily
Adults	1188	18 to 108 mg once daily

Adverse events during exposure were obtained primarily by general inquiry and recorded by clinical investigators using their own terminology. Consequently, to provide a meaningful estimate of the proportion of individuals experiencing adverse events, events were grouped in standardized categories using MedDRA terminology.

The stated frequencies of adverse events represent the proportion of individuals who experienced, at least once, a treatment-emergent adverse event of the type listed. An event was considered treatment-emergent if it occurred for the first time or worsened while receiving therapy following baseline evaluation.

Throughout this section, adverse reactions are reported. Adverse reactions are adverse events that were considered to be reasonably associated with the use of CONCERTA based on the comprehensive assessment of the available adverse event information. A causal association for CONCERTA often cannot be reliably established in individual cases. Further, because clinical trials are conducted under widely varying conditions, adverse reaction rates observed in the clinical trials of a drug cannot be directly compared to rates in clinical trials of another drug and may not reflect the rates observed in clinical practice.

The majority of adverse reactions were mild to moderate in severity.

### **6.1 Commonly Observed Adverse Reactions in Double-Blind, Placebo-Controlled Clinical Trials**

Adverse reactions in either the pediatric or adult double-blind adverse reactions tables may be relevant for both patient populations.

#### **Children and Adolescents**

Table 4 lists the adverse reactions reported in 1% or more of CONCERTA-treated children and adolescent subjects in 4 placebo-controlled, double-blind clinical trials.

**Table 4. Adverse Reactions Reported by  $\geq 1\%$  of CONCERTA-Treated Children and Adolescent Subjects in 4 Placebo-Controlled, Double-Blind Clinical Trials of CONCERTA**

<b>System/Organ Class</b> Adverse Reaction	<b>CONCERTA</b> <b>(n=321)</b> %	<b>Placebo</b> <b>(n=318)</b> %
<b>Gastrointestinal Disorders</b>		
Abdominal pain upper	6.2	3.8
Vomiting	2.8	1.6
<b>General Disorders and Administration Site Conditions</b>		
Pyrexia	2.2	0.9
<b>Infections and Infestations</b>		
Nasopharyngitis	2.8	2.2
<b>Nervous System Disorders</b>		
Dizziness	1.9	0
<b>Psychiatric Disorders</b>		
Insomnia*	2.8	0.3
<b>Respiratory, Thoracic and Mediastinal Disorders</b>		
Cough	1.9	0.9
Oropharyngeal pain	1.2	0.9

\*Terms of Initial insomnia (CONCERTA=0.6%) and Insomnia (CONCERTA=2.2%) are combined into Insomnia.

The majority of adverse reactions were mild to moderate in severity.

## Adults

Table 5 lists the adverse reactions reported in 1% or more of CONCERTA-treated adults in 2 placebo-controlled, double-blind clinical trials.

**Table 5. Adverse Reactions Reported by  $\geq 1\%$  of CONCERTA-Treated Adult Subjects in 2 Placebo-Controlled, Double-Blind Clinical Trials\***

<b>System/Organ Class</b> Adverse Reaction	<b>CONCERTA</b> <b>(n=415)</b> %	<b>Placebo</b> <b>(n=212)</b> %
<b>Cardiac Disorders</b>		
Tachycardia	4.8	0
Palpitations	3.1	0.9
<b>Ear and Labyrinth Disorders</b>		
Vertigo	1.7	0
<b>Eye Disorders</b>		
Vision blurred	1.7	0.5
<b>Gastrointestinal Disorders</b>		
Dry mouth	14.0	3.8
Nausea	12.8	3.3
Dyspepsia	2.2	0.9
Vomiting	1.7	0.5
Constipation	1.4	0.9
<b>General Disorders and Administration Site Conditions</b>		
Irritability	5.8	1.4
<b>Infections and Infestations</b>		
Upper respiratory tract infection	2.2	0.9
<b>Investigations</b>		
Weight decreased	6.5	3.3
<b>Metabolism and Nutrition Disorders</b>		



<b>System/Organ Class</b>	<b>CONCERTA (n=415)</b>	<b>Placebo (n=212)</b>
<b>Adverse Reaction</b>	<b>%</b>	<b>%</b>
Decreased appetite	25.3	6.6
Anorexia	1.7	0
<b>Musculoskeletal and Connective Tissue Disorders</b>		
Muscle tightness	1.9	0
<b>Nervous System Disorders</b>		
Headache	22.2	15.6
Dizziness	6.7	5.2
Tremor	2.7	0.5
Paresthesia	1.2	0
Sedation	1.2	0
Tension headache	1.2	0.5
<b>Psychiatric Disorders</b>		
Insomnia	12.3	6.1
Anxiety	8.2	2.4
Initial insomnia	4.3	2.8
Depressed mood	3.9	1.4
Nervousness	3.1	0.5
Restlessness	3.1	0
Agitation	2.2	0.5
Aggression	1.7	0.5
Bruxism	1.7	0.5
Depression	1.7	0.9
Libido decreased	1.7	0.5
Affect lability	1.4	0.9
Confusional state	1.2	0.5
Tension	1.2	0.5
<b>Respiratory, Thoracic and Mediastinal Disorders</b>		
Oropharyngeal pain	1.7	1.4
<b>Skin and Subcutaneous Tissue Disorders</b>		
Hyperhidrosis	5.1	0.9

\* Included doses up to 108 mg.

The majority of ADRs were mild to moderate in severity.

## 6.2 Other Adverse Reactions Observed in CONCERTA Clinical Trials

This section includes adverse reactions reported by CONCERTA-treated subjects in double-blind trials that do not meet the criteria specified for Table 4 or Table 5 and all adverse reactions reported by CONCERTA-treated subjects who participated in open-label and postmarketing clinical trials.

Blood and Lymphatic System Disorders: Leukopenia

Eye Disorders: Accommodation disorder, Dry eye

Vascular Disorders: Hot flush

Gastrointestinal Disorders: Abdominal discomfort, Abdominal pain, Diarrhea

General Disorders and Administrative Site Conditions: Asthenia, Fatigue, Feeling jittery, Thirst

Infections and Infestations: Sinusitis

Investigations: Alanine aminotransferase increased, Blood pressure increased, Cardiac murmur, Heart rate increased

Musculoskeletal and Connective Tissue Disorders: Muscle spasms

Nervous System Disorders: Lethargy, Psychomotor hyperactivity, Somnolence

Psychiatric Disorders: Anger, Hypervigilance, Mood altered, Mood swings, Panic attack, Sleep disorder, Tearfulness, Tic

Reproductive System and Breast Disorders: Erectile dysfunction

Respiratory, Thoracic and Mediastinal Disorders: Dyspnea

Skin and Subcutaneous Tissue Disorders: Rash, Rash macular

Vascular Disorders: Hypertension

### **6.3 Discontinuation Due to Adverse Reactions**

Adverse reactions in the 4 placebo-controlled studies of children and adolescents leading to discontinuation occurred in 2 CONCERTA patients (0.6%) including depressed mood (1, 0.3%) and headache and insomnia (1, 0.3%), and 6 placebo patients (1.9%) including headache and insomnia (1, 0.3%), irritability (2, 0.6%), headache (1, 0.3%), psychomotor hyperactivity (1, 0.3%), and tic (1, 0.3%).

In the 2 placebo-controlled studies of adults, 25 CONCERTA patients (6.0%) and 6 placebo patients (2.8%) discontinued due to an adverse reaction. Those events with an incidence of >0.5% in the CONCERTA patients included anxiety (1.7%), irritability (1.4%), blood pressure increased (1.0%), and nervousness (0.7%). In placebo patients, blood pressure increased and depressed mood had an incidence of >0.5% (0.9%).

In the 11 open-label studies of children, adolescents, and adults, 266 CONCERTA patients (7.0%) discontinued due to an adverse reaction. Those events with an incidence of >0.5% included insomnia (1.2%), irritability (0.8%), anxiety (0.7%), decreased appetite (0.7%), and tic (0.6%).

### **6.4 Blood Pressure and Heart Rate Increases**

In the laboratory classroom clinical trials in children (Studies 1 and 2), both CONCERTA once daily and methylphenidate three times daily increased resting pulse by an average of 2

to 6 bpm and produced average increases of systolic and diastolic blood pressure of roughly 1 to 4 mm Hg during the day, relative to placebo. In the placebo-controlled adolescent trial (Study 4), mean increases from baseline in resting pulse rate were observed with CONCERTA® and placebo at the end of the double-blind phase (5 and 3 beats/minute, respectively). Mean increases from baseline in blood pressure at the end of the double-blind phase for CONCERTA and placebo-treated patients were 0.7 and 0.7 mm Hg (systolic) and 2.6 and 1.4 mm Hg (diastolic), respectively. In one placebo-controlled study in adults (Study 6), dose-dependent mean increases of 3.9 to 9.8 bpm from baseline in standing pulse rate were observed with CONCERTA at the end of the double-blind treatment vs. an increase of 2.7 beats/minute with placebo. Mean changes from baseline in standing blood pressure at the end of double-blind treatment ranged from 0.1 to 2.2 mm Hg (systolic) and -0.7 to 2.2 mm Hg (diastolic) for CONCERTA and was 1.1 mm Hg (systolic) and -1.8 mm Hg (diastolic) for placebo. In a second placebo-controlled study in adults (Study 5), mean changes from baseline in resting pulse rate were observed for CONCERTA and placebo at the end of the double-blind treatment (3.6 and -1.6 beats/minute, respectively). Mean changes from baseline in blood pressure at the end of the double-blind treatment for CONCERTA and placebo-treated patients were -1.2 and -0.5 mm Hg (systolic) and 1.1 and 0.4 mm Hg (diastolic), respectively [see *Warnings and Precautions* (5.3)].

## 6.5 Postmarketing Experience

The following additional adverse reactions have been identified during postapproval use of CONCERTA. Because these reactions are reported voluntarily from a population of uncertain size, it is not always possible to reliably estimate their frequency:

**Blood and Lymphatic System Disorders:** Pancytopenia, Thrombocytopenia, Thrombocytopenic purpura

**Cardiac Disorders:** Angina pectoris, Bradycardia, Extrasystoles, Supraventricular tachycardia, Ventricular extrasystoles

**Eye Disorders:** Diplopia, Increased intraocular pressure, Mydriasis, Visual impairment

**General Disorders:** Chest pain, Chest discomfort, Drug effect decreased, Hyperpyrexia, Therapeutic response decreased

**Hepatobiliary disorders:** Hepatocellular injury, Acute hepatic failure

**Immune System Disorders:** Hypersensitivity reactions such as Angioedema, Anaphylactic reactions, Auricular swelling, Bullous conditions, Exfoliative conditions, Urticarias, Pruritus NEC, Rashes, Eruptions, and Exanthemas NEC

Investigations: Blood alkaline phosphatase increased, Blood bilirubin increased, Hepatic enzyme increased, Platelet count decreased, White blood cell count abnormal

Musculoskeletal, Connective Tissue and Bone Disorders: Arthralgia, Myalgia, Muscle twitching, Rhabdomyolysis

Nervous System Disorders: Convulsion, Grand mal convulsion, Dyskinesia, Serotonin syndrome in combination with serotonergic drugs, Motor and Verbal Tics

Psychiatric Disorders: Disorientation, Hallucination, Hallucination auditory, Hallucination visual, Mania, Logorrhea, Libido changes

Reproductive System and Breast Disorders: Priapism

Skin and Subcutaneous Tissue Disorders: Alopecia, Erythema

Vascular Disorders: Raynaud's phenomenon

## **7 DRUG INTERACTIONS**

### **7.1 MAO Inhibitors**

CONCERTA should not be used in patients being treated (currently or within the preceding 2 weeks) with MAO inhibitors [*see Contraindications (4.2)*].

### **7.2 Vasopressor Agents**

Because of possible increases in blood pressure, CONCERTA should be used cautiously with vasopressor agents [*see Warnings and Precautions (5.3)*].

### **7.3 Coumarin Anticoagulants, Antidepressants, and Selective Serotonin Reuptake Inhibitors**

Human pharmacologic studies have shown that methylphenidate may inhibit the metabolism of coumarin anticoagulants, anticonvulsants (eg, phenobarbital, phenytoin, primidone), and some antidepressants (tricyclics and selective serotonin reuptake inhibitors). Downward dose adjustment of these drugs may be required when given concomitantly with methylphenidate. It may be necessary to adjust the dosage and monitor plasma drug concentrations (or, in the case of coumarin, coagulation times), when initiating or discontinuing concomitant methylphenidate.

### **7.4 Halogenated Anesthetics**

Concomitant use of halogenated anesthetics and CONCERTA may increase the risk of sudden blood pressure and heart rate increase during surgery. Monitor blood pressure and avoid use of CONCERTA in patients being treated with anesthetics on the day of surgery.

## **7.5 Risperidone**

Combined use of methylphenidate with risperidone when there is a change, whether an increase or decrease, in dosage of either or both medications, may increase the risk of extrapyramidal symptoms (EPS). Monitor for signs of EPS.

## **8 USE IN SPECIFIC POPULATIONS**

### **8.1 Pregnancy**

#### **Pregnancy Category C**

Methylphenidate has been shown to have teratogenic effects in rabbits when given in doses of 200 mg/kg/day, which is approximately 100 times and 40 times the maximum recommended human dose on a mg/kg and mg/m<sup>2</sup> basis, respectively.

A reproduction study in rats revealed no evidence of harm to the fetus at oral doses up to 30 mg/kg/day, approximately 15-fold and 3-fold the maximum recommended human dose of CONCERTA on a mg/kg and mg/m<sup>2</sup> basis, respectively. The approximate plasma exposure to methylphenidate plus its main metabolite PPAA in pregnant rats was 1-2 times that seen in trials in volunteers and patients with the maximum recommended dose of CONCERTA based on the AUC.

The safety of methylphenidate for use during human pregnancy has not been established. There are no adequate and well-controlled studies in pregnant women. CONCERTA should be used during pregnancy only if the potential benefit justifies the potential risk to the fetus.

### **8.2 Labor and Delivery**

The effect of CONCERTA on labor and delivery in humans is unknown.

### **8.3 Nursing Mothers**

It is not known whether methylphenidate is excreted in human milk. Because many drugs are excreted in human milk, caution should be exercised if CONCERTA is administered to a nursing woman.

In lactating female rats treated with a single oral dose of 5 mg/kg radiolabeled methylphenidate, radioactivity (representing methylphenidate and/or its metabolites) was observed in milk and levels were generally similar to those in plasma.

### **8.4 Pediatric Use**

CONCERTA should not be used in children under six years, since safety and efficacy in this age group have not been established. Long-term effects of methylphenidate in children have not been well established.

### **8.5 Geriatric Use**

CONCERTA has not been studied in patients greater than 65 years of age.

## **9 DRUG ABUSE AND DEPENDENCE**

### **9.1 Controlled Substance**

CONCERTA contains methylphenidate, a Schedule II controlled substance.

### **9.2 Abuse**

CONCERTA has a high potential for abuse and misuse which can lead to the development of a substance use disorder, including addiction [*see Warnings and Precautions (5.1)*]. CONCERTA can be diverted for non-medical use into illicit channels or distribution.

Abuse is the intentional non-therapeutic use of a drug, even once, to achieve a desired psychological or physiological effect. Misuse is the intentional use, for therapeutic purposes, of a drug by an individual in a way other than prescribed by a health care provider or for whom it was not prescribed. Drug addiction is a cluster of behavioral, cognitive, and physiological phenomena that may include a strong desire to take the drug, difficulties in controlling drug use (e.g., continuing drug use despite harmful consequences, giving a higher priority to drug use than other activities and obligations), and possible tolerance or physical dependence.

Misuse and abuse of methylphenidate may cause increased heart rate, respiratory rate, or blood pressure; sweating; dilated pupils; hyperactivity; restlessness; insomnia; decreased appetite; loss of coordination; tremors; flushed skin; vomiting; and/or abdominal pain. Anxiety, psychosis, hostility, aggression, and suicidal or homicidal ideation have also been observed with CNS stimulants abuse and/or misuse. Misuse and abuse of CNS stimulants, including CONCERTA, can result in overdose and death [*see Overdosage (10)*], and this risk is increased with higher doses or unapproved methods of administration, such as snorting or injection.

In two placebo-controlled human abuse potential studies, single oral doses of CONCERTA were compared to single oral doses of immediate-release methylphenidate (IR MPH) and placebo in subjects with a history of recreational stimulant use to assess relative abuse potential. For the purpose of this assessment, the response for each of the subjective measures was defined as the maximum effect within the first 8 hours after dose administration.

In one study (n=40), both CONCERTA (108 mg) and 60 mg IR MPH compared to placebo produced statistically significantly greater responses on the five subjective measures suggestive of abuse potential. In comparisons between the two active treatments, however, CONCERTA (108 mg) produced variable responses on positive subjective measures that were either statistically indistinguishable from (Abuse Potential, Drug Liking,

Amphetamine, and Morphine Benzodrine Group [Euphoria]) or statistically less than (Stimulation – Euphoria) responses produced by 60 mg IR MPH.

In another study (n=49), both doses of CONCERTA (54 mg and 108 mg) and both doses of IR MPH (50 mg and 90 mg) produced statistically significantly greater responses compared to placebo on the two primary scales used in the study (Drug Liking, Euphoria). When doses of CONCERTA (54 mg and 108 mg) were compared to IR MPH (50 mg and 90 mg), respectively, CONCERTA produced statistically significantly lower subjective responses on these two scales than IR MPH. CONCERTA (108 mg) produced responses that were statistically indistinguishable from the responses on these two scales produced by IR MPH (50 mg). Differences in subjective responses to the respective doses should be considered in the context that only 22% of the total amount of methylphenidate in CONCERTA tablets is available for immediate release from the drug overcoat [*see System Components and Performance (11.1)*].

Although these findings reveal a relatively lower response to CONCERTA on subjective measures suggestive of abuse potential compared to IR MPH at roughly equivalent total MPH doses, the relevance of these findings to the abuse potential of CONCERTA in the community is unknown.

### **9.3 Dependence**

#### Physical Dependence

CONCERTA may produce physical dependence. Physical dependence is a state that develops as a result of physiological adaptation in response to repeated drug use, manifested by withdrawal signs and symptoms after abrupt discontinuation or a significant dose reduction of a drug.

Withdrawal signs and symptoms after abrupt discontinuation or dose reduction following prolonged use of CNS stimulants including CONCERTA include dysphoric mood; depression; fatigue; vivid, unpleasant dreams; insomnia or hypersomnia; increased appetite; and psychomotor retardation or agitation.

#### Tolerance

CONCERTA may produce tolerance. Tolerance is a physiological state characterized by a reduced response to a drug after repeated administration (i.e., a higher dose of a drug is required to produce the same effect that was once obtained at a lower dose).

## **10 OVERDOSAGE**

### **10.1 Clinical Effects of Overdose**

Overdose of CNS stimulants is characterized by the following sympathomimetic effects:

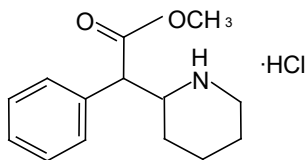
- Cardiovascular effects including tachyarrhythmias, and hypertension or hypotension. Vasospasm, myocardial infarction, or aortic dissection may precipitate sudden cardiac death. Takotsubo cardiomyopathy may develop.
- CNS effects including psychomotor agitation, confusion, and hallucinations. Serotonin syndrome, seizures, cerebral vascular accidents, and coma may occur.
- Life-threatening hyperthermia (temperatures greater than 104°F) and rhabdomyolysis may develop.

## 10.2 Overdose Management

Consider the possibility of multiple drug ingestion. The pharmacokinetic profile of CONCERTA should be considered when treating patients with overdose. Because methylphenidate has a large volume of distribution and is rapidly metabolized, dialysis is not useful. Consider contacting the Poison Help line or a medical toxicologist for additional overdose management recommendations.

## 11 DESCRIPTION

CONCERTA<sup>®</sup> is a central nervous system (CNS) stimulant. CONCERTA is available in four tablet strengths. Each extended-release tablet for once-a-day oral administration contains 18, 27, 36, or 54 mg of methylphenidate HCl USP and is designed to have a 12-hour duration of effect. Chemically, methylphenidate HCl is d,l (racemic) methyl  $\alpha$ -phenyl-2-piperidineacetate hydrochloride. Its empirical formula is C<sub>14</sub>H<sub>19</sub>NO<sub>2</sub>•HCl. Its structural formula is:



Methylphenidate HCl USP is a white, odorless crystalline powder. Its solutions are acid to litmus. It is freely soluble in water and in methanol, soluble in alcohol, and slightly soluble in chloroform and in acetone. Its molecular weight is 269.77.

CONCERTA also contains the following inert ingredients: butylated hydroxytoluene, carnauba wax, cellulose acetate, hypromellose, lactose, phosphoric acid, poloxamer, polyethylene glycol, polyethylene oxides, povidone, propylene glycol, sodium chloride, stearic acid, succinic acid, synthetic iron oxides, titanium dioxide, and triacetin.

### 11.1 System Components and Performance

CONCERTA uses osmotic pressure to deliver methylphenidate HCl at a controlled rate.



The system, which resembles a conventional tablet in appearance, comprises an osmotically active trilayer core surrounded by a semipermeable membrane with an immediate-release drug overcoat. The trilayer core is composed of two drug layers containing the drug and excipients, and a push layer containing osmotically active components. There is a precision-laser drilled orifice on the drug-layer end of the tablet. In an aqueous environment, such as the gastrointestinal tract, the drug overcoat dissolves within one hour, providing an initial dose of methylphenidate. Water permeates through the membrane into the tablet core. As the osmotically active polymer excipients expand, methylphenidate is released through the orifice. The membrane controls the rate at which water enters the tablet core, which in turn controls drug delivery. Furthermore, the drug release rate from the system increases with time over a period of 6 to 7 hours due to the drug-concentration gradient incorporated into the two drug layers of CONCERTA. The biologically inert components of the tablet remain intact during gastrointestinal transit and are eliminated in the stool as a tablet shell along with insoluble core components. It is possible that CONCERTA extended-release tablets may be visible on abdominal x-rays under certain circumstances, especially when digital enhancing techniques are utilized.

## **12 CLINICAL PHARMACOLOGY**

### **12.1 Mechanism of Action**

Methylphenidate HCl is a central nervous system (CNS) stimulant. The mode of therapeutic action in Attention Deficit Hyperactivity Disorder (ADHD) is not known. Methylphenidate is thought to block the reuptake of norepinephrine and dopamine into the presynaptic neuron and increase the release of these monoamines into the extraneuronal space.

### **12.2 Pharmacodynamics**

Methylphenidate is a racemic mixture comprised of the d- and l-isomers. The d-isomer is more pharmacologically active than the l-isomer.

### **12.3 Pharmacokinetics**

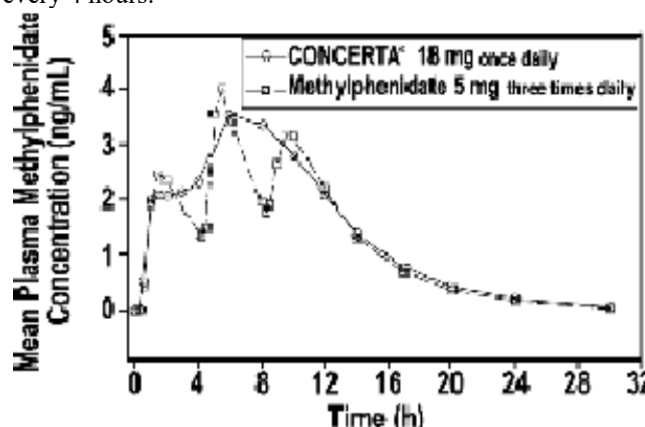
#### **Absorption**

Methylphenidate is readily absorbed. Following oral administration of CONCERTA, plasma methylphenidate concentrations increase rapidly, reaching an initial maximum at about 1 hour, followed by gradual ascending concentrations over the next 5 to 9 hours, after which a gradual decrease begins. Mean times to reach peak plasma concentrations across all doses of CONCERTA occurred between 6 and 10 hours.

CONCERTA once daily minimizes the fluctuations between peak and trough concentrations associated with immediate-release methylphenidate three times daily (see

Figure 1). The relative bioavailability of CONCERTA once daily and methylphenidate three times daily in adults is comparable.

**Figure 1.** Mean methylphenidate plasma concentrations in 36 adults, following a single dose of CONCERTA 18 mg once daily and immediate-release methylphenidate 5 mg three times daily administered every 4 hours.



The mean single-dose pharmacokinetic parameters in 36 healthy adults following the administration of CONCERTA 18 mg once daily and methylphenidate 5 mg three times daily are summarized in Table 6.

**Table 6. Pharmacokinetic Parameters (Mean  $\pm$  SD) After Single Dose in Healthy Adults**

Parameters	CONCERTA (18 mg once daily)	Methylphenidate (5 mg three times daily)
	(n=36)	(n=35)
$C_{max}$ (ng/mL)	$3.7 \pm 1.0$	$4.2 \pm 1.0$
$T_{max}$ (h)	$6.8 \pm 1.8$	$6.5 \pm 1.8$
$AUC_{inf}$ (ng•h/mL)	$41.8 \pm 13.9$	$38.0 \pm 11.0$
$t_{1/2}$ (h)	$3.5 \pm 0.4$	$3.0 \pm 0.5$

The pharmacokinetics of CONCERTA were evaluated in healthy adults following single- and multiple-dose administration (steady state) of doses up to 144 mg/day. The mean half-life was about 3.6 hours. No differences in the pharmacokinetics of CONCERTA were noted following single and repeated once-daily dosing, indicating no significant drug accumulation. The AUC and  $t_{1/2}$  following repeated once-daily dosing are similar to those following the first dose of CONCERTA in a dose range of 18 to 144 mg.

### Dose Proportionality

Following administration of CONCERTA in single doses of 18, 36, and 54 mg/day to healthy adults,  $C_{max}$  and  $AUC_{(0-inf)}$  of d-methylphenidate were proportional to dose, whereas l-methylphenidate  $C_{max}$  and  $AUC_{(0-inf)}$  increased disproportionately with respect to dose. Following administration of CONCERTA, plasma concentrations of the l-isomer

were approximately 1/40 the plasma concentrations of the d-isomer.

In healthy adults, single and multiple dosing of once-daily CONCERTA doses from 54 to 144 mg/day resulted in linear and dose-proportional increases in  $C_{\max}$  and  $AUC_{\text{inf}}$  for total methylphenidate (MPH) and its major metabolite,  $\alpha$ -phenyl-piperidine acetic acid (PPAA). There was no time dependency in the pharmacokinetics of methylphenidate. The ratio of metabolite (PPAA) to parent drug (MPH) was constant across doses from 54 to 144 mg/day, both after single dose and upon multiple dosing.

In a multiple-dose study in adolescent ADHD patients aged 13 to 16 administered their prescribed dose (18 to 72 mg/day) of CONCERTA, mean  $C_{\max}$  and  $AUC_{\text{TAU}}$  of d- and total methylphenidate increased proportionally with respect to dose.

### Distribution

Plasma methylphenidate concentrations in adults and adolescents decline biexponentially following oral administration. The half-life of methylphenidate in adults and adolescents following oral administration of CONCERTA was approximately 3.5 hours.

### Metabolism and Excretion

In humans, methylphenidate is metabolized primarily by de-esterification to PPAA, which has little or no pharmacologic activity. In adults the metabolism of CONCERTA once daily as evaluated by metabolism to PPAA is similar to that of methylphenidate three times daily. The metabolism of single and repeated once-daily doses of CONCERTA is similar.

After oral dosing of radiolabeled methylphenidate in humans, about 90% of the radioactivity was recovered in urine. The main urinary metabolite was PPAA, accounting for approximately 80% of the dose.

### Food Effects

In patients, there were no differences in either the pharmacokinetics or the pharmacodynamic performance of CONCERTA when administered after a high-fat breakfast. There is no evidence of dose dumping in the presence or absence of food.

### Alcohol Effect

An *in vitro* study was conducted to explore the effect of alcohol on the release characteristics of methylphenidate from the CONCERTA 18 mg tablet dosage form. At an alcohol concentration up to 40% there was no increased release of methylphenidate in the first hour. The results with the 18 mg tablet strength are considered representative of the other available tablet strengths.

## Special Populations

### *Gender*

In healthy adults, the mean dose-adjusted AUC<sub>(0-inf)</sub> values for CONCERTA were 36.7 ng•h/mL in men and 37.1 ng•h/mL in women, with no differences noted between the two groups.

### *Race*

In adults receiving CONCERTA, dose-adjusted AUC<sub>(0-inf)</sub> was consistent across ethnic groups; however, the sample size may have been insufficient to detect ethnic variations in pharmacokinetics.

### *Age*

Increase in age resulted in increased apparent oral clearance (CL/F) (58% increase in adolescents compared to children). Some of these differences could be explained by body-weight differences among these populations. This suggests that subjects with higher body weight may have lower exposures of total methylphenidate at similar doses.

The pharmacokinetics of CONCERTA have not been studied in children less than 6 years of age.

### *Renal Insufficiency*

There is no experience with the use of CONCERTA in patients with renal insufficiency. After oral administration of radiolabeled methylphenidate in humans, methylphenidate was extensively metabolized and approximately 80% of the radioactivity was excreted in the urine in the form of PPAA. Since renal clearance is not an important route of methylphenidate clearance, renal insufficiency is expected to have little effect on the pharmacokinetics of CONCERTA.

### *Hepatic Insufficiency*

There is no experience with the use of CONCERTA in patients with hepatic insufficiency.

## **13 NONCLINICAL TOXICOLOGY**

### **13.1 Carcinogenesis, Mutagenesis, and Impairment of Fertility**

#### **Carcinogenesis**

In a lifetime carcinogenicity study carried out in B6C3F1 mice, methylphenidate caused an increase in hepatocellular adenomas and, in males only, an increase in hepatoblastomas at a daily dose of approximately 60 mg/kg/day. This dose is approximately 30 times and 4 times the maximum recommended human dose of CONCERTA on a mg/kg and mg/m<sup>2</sup> basis, respectively. Hepatoblastoma is a relatively rare rodent malignant tumor type. There was no increase in total malignant hepatic tumors. The mouse strain used is sensitive to the development of hepatic tumors, and the significance of these results to humans is unknown.

Methylphenidate did not cause any increases in tumors in a lifetime carcinogenicity study carried out in F344 rats; the highest dose used was approximately 45 mg/kg/day, which is approximately 22 times and 5 times the maximum recommended human dose of CONCERTA on a mg/kg and mg/m<sup>2</sup> basis, respectively.

In a 24-week carcinogenicity study in the transgenic mouse strain p53+/-, which is sensitive to genotoxic carcinogens, there was no evidence of carcinogenicity. Male and female mice were fed diets containing the same concentration of methylphenidate as in the lifetime carcinogenicity study; the high-dose groups were exposed to 60 to 74 mg/kg/day of methylphenidate.

### Mutagenesis

Methylphenidate was not mutagenic in the *in vitro* Ames reverse mutation assay or the *in vitro* mouse lymphoma cell forward mutation assay. Sister chromatid exchanges and chromosome aberrations were increased, indicative of a weak clastogenic response, in an *in vitro* assay in cultured Chinese Hamster Ovary cells. Methylphenidate was negative *in vivo* in males and females in the mouse bone marrow micronucleus assay.

### Impairment of Fertility

Methylphenidate did not impair fertility in male or female mice that were fed diets containing the drug in an 18-week Continuous Breeding study. The study was conducted at doses up to 160 mg/kg/day, approximately 80-fold and 8-fold the highest recommended human dose of CONCERTA on a mg/kg and mg/m<sup>2</sup> basis, respectively.

## 14 CLINICAL STUDIES

CONCERTA<sup>®</sup> was demonstrated to be effective in the treatment of Attention Deficit Hyperactivity Disorder (ADHD) in 4 randomized, double-blind, placebo-controlled studies in children and adolescents and 2 double-blind placebo-controlled studies in adults who met the Diagnostic and Statistical Manual 4<sup>th</sup> edition (DSM-IV) criteria for ADHD.

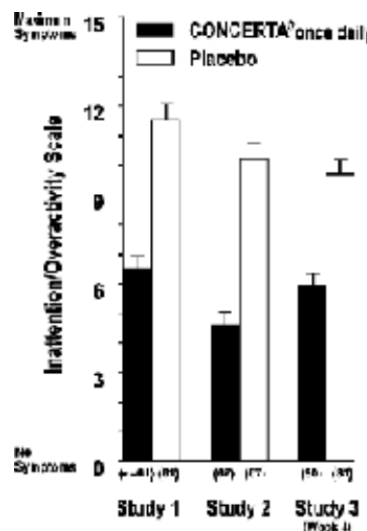
### 14.1 Children

Three double-blind, active- and placebo-controlled studies were conducted in 416 children aged 6 to 12 years. The controlled studies compared CONCERTA given once daily (18, 36, or 54 mg), methylphenidate given three times daily over 12 hours (15, 30, or 45 mg total daily dose), and placebo in two single-center, 3-week crossover studies (Studies 1 and 2) and in a multicenter, 4-week, parallel-group comparison (Study 3). The primary comparison of interest in all three trials was CONCERTA versus placebo.

Symptoms of ADHD were evaluated by community schoolteachers using the Inattention/Overactivity with Aggression (IOWA) Conners scale. Statistically significant

reduction in the Inattention/Overactivity subscale versus placebo was shown consistently across all three controlled studies for CONCERTA. The scores for CONCERTA and placebo for the three studies are presented in Figure 2.

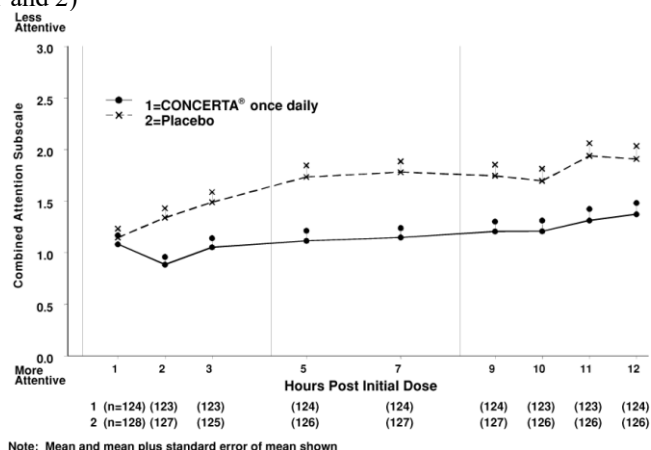
**Figure 2.** Mean Community School Teacher Iowa Connors Inattention/Overactivity Scores with CONCERTA once daily (18, 36, or 54 mg) and placebo. Studies 1 and 2 involved a 3-way crossover of 1 week per treatment arm. Study 3 involved 4 weeks of parallel-group treatments with a Last Observation Carried Forward analysis at week 4. Error bars represent the mean plus standard error of the mean.



In Studies 1 and 2, symptoms of ADHD were evaluated by laboratory schoolteachers using the SKAMP\* laboratory school rating scale. The combined results from these two studies demonstrated statistically significant improvements in attention and behavior in patients treated with CONCERTA versus placebo that were maintained through 12 hours after dosing. Figure 3 presents the laboratory schoolteacher SKAMP ratings for CONCERTA and placebo.

\*Swanson, Kotkin, Agler, M-Fynn, and Pelham

**Figure 3.** Laboratory School Teacher SKAMP Ratings: Mean (SEM) of Combined Attention (Studies 1 and 2)



## 14.2 Adolescents

In a randomized, double-blind, multicenter, placebo-controlled trial (Study 4) involving 177 patients, CONCERTA was demonstrated to be effective in the treatment of ADHD in adolescents aged 13 to 18 years at doses up to 72 mg/day (1.4 mg/kg/day). Of 220 patients who entered an open 4-week titration phase, 177 were titrated to an individualized dose (maximum of 72 mg/day) based on meeting specific improvement criteria on the ADHD Rating Scale and the Global Assessment of Effectiveness with acceptable tolerability. Patients who met these criteria were then randomized to receive either their individualized dose of CONCERTA (18 – 72 mg/day, n=87) or placebo (n=90) during a two-week double-blind phase. At the end of this phase, mean scores for the investigator rating on the ADHD Rating Scale demonstrated that CONCERTA was statistically significantly superior to placebo.

## 14.3 Adults

Two double-blind, placebo-controlled studies were conducted in 627 adults aged 18 to 65 years. The controlled studies compared CONCERTA administered once daily and placebo in a multicenter, parallel-group, 7-week dose-titration study (Study 5) (36 to 108 mg/day) and in a multicenter, parallel-group, 5-week, fixed-dose study (Study 6) (18, 36, and 72 mg/day).

Study 5 demonstrated the effectiveness of CONCERTA in the treatment of ADHD in adults aged 18 to 65 years at doses from 36 mg/day to 108 mg/day based on the change from baseline to final study visit on the Adult ADHD Investigator Rating Scale (AISRS). Of 226 patients who entered the 7-week trial, 110 were randomized to CONCERTA and 116 were randomized to placebo. Treatment was initiated at 36 mg/day and patients continued with incremental increases of 18 mg/day (36 to 108 mg/day) based on meeting specific improvement criteria with acceptable tolerability. At the final study visit, mean change

scores (LS Mean, SEM) for the investigator rating on the AISRS demonstrated that CONCERTA was statistically significantly superior to placebo.

Study 6 was a multicenter, double-blind, randomized, placebo-controlled, parallel-group, dose-response study (5-week duration) with 3 fixed-dose groups (18, 36, and 72 mg). Patients were randomized to receive CONCERTA administered at doses of 18 mg (n=101), 36 mg (n=102), 72 mg/day (n=102), or placebo (n=96). All three doses of CONCERTA were statistically significantly more effective than placebo in improving CAARS (Conners' Adult ADHD Rating Scale) total scores at double-blind end point in adult subjects with ADHD.

## **16 HOW SUPPLIED/STORAGE AND HANDLING**

CONCERTA® (methylphenidate HCl) Extended-release Tablets are available in 18 mg, 27 mg, 36 mg, and 54 mg dosage strengths. The 18 mg tablets are yellow and imprinted with "alza 18". The 27 mg tablets are gray and imprinted with "alza 27". The 36 mg tablets are white and imprinted with "alza 36". The 54 mg tablets are brownish-red and imprinted with "alza 54". All four dosage strengths are supplied in high-density polyethylene (HDPE) bottles containing either 30 or 100 tablets, and desiccant

Not all strengths or pack sizes may be marketed

### **Storage and Handling**

Do not Store above 30 °C & Protect from Moisture.

## **17 PATIENT COUNSELING INFORMATION**

Advise the patient to read the FDA-approved patient labeling (Medication Guide).

### Abuse, Misuse, and Addiction

Educate patients and their families about the risks of abuse, misuse, and addiction of CONCERTA, which can lead to overdose and death, and proper disposal of any unused drug [see *Warnings and Precautions (5.1)*, *Drug Abuse and Dependence (9.2)*, *Overdosage (10)*]. Advise patients to store CONCERTA in a safe place, preferably locked, and instruct patients to not give CONCERTA to anyone else.

### Risks to Patients with Serious Cardiac Disease

Advise patients that there are potential risks to patients with serious cardiac disease, including sudden death, with CONCERTA use. Instruct patients to contact a healthcare provider immediately if they develop symptoms such as exertional chest pain, unexplained



syncope, or other symptoms suggestive of cardiac disease [see *Warnings and Precautions* (5.2)].

#### Increased Blood Pressure and Heart Rate

Advise patients that CONCERTA can cause elevations in blood pressure and heart rate [see *Warnings and Precautions* (5.3)].

#### Psychiatric Risks

Advise patients that CONCERTA, at recommended doses, can cause psychotic or manic symptoms, even in patients without a prior history of psychotic symptoms or mania [see *Warnings and Precautions* (5.4)].

#### Priapism

Advise patients, caregivers, and family members of the possibility of painful or prolonged penile erections (priapism). **Instruct the patient to seek immediate medical attention in the event of priapism** [see *Warnings and Precautions* (5.6)].

#### Circulation Problems in Fingers and Toes [Peripheral Vasculopathy, including Raynaud's Phenomenon]

Instruct patients beginning treatment with CONCERTA about the risk of peripheral vasculopathy, including Raynaud's phenomenon, and associated signs and symptoms: fingers or toes may feel numb, cool, painful, and/or may change color from pale, to blue, to red.

Instruct patients to report to their physician any new numbness, pain, skin color change, or sensitivity to temperature in fingers or toes.

**Instruct patients to call their physician immediately with any signs of unexplained wounds appearing on fingers or toes while taking CONCERTA.**

Further clinical evaluation (e.g., rheumatology referral) may be appropriate for certain patients.

#### Suppression of Growth

Advise patients, caregivers, and family members that CONCERTA may cause slowing of growth and weight loss [see *Warnings and Precautions* (5.8)].

#### Increased Intraocular Pressure (IOP) and Glaucoma

Advise patients that IOP and glaucoma may occur during treatment with CONCERTA [see *Warnings and Precautions* (5.12)].

### Motor and Verbal Tics, and Worsening of Tourette's Syndrome

Advise patients that motor and verbal tics and worsening of Tourette's Syndrome may occur during treatment with CONCERTA. Instruct patients to notify their healthcare provider if emergence of new tics or worsening of tics or Tourette's syndrome occurs [*see Warnings and Precautions (5.13)*].

### Administration Instructions

Patients should be informed that CONCERTA should be swallowed whole with the aid of liquids. Tablets should not be chewed, divided, or crushed. The medication is contained within a nonabsorbable shell designed to release the drug at a controlled rate. The tablet shell, along with insoluble core components, is eliminated from the body; patients should not be concerned if they occasionally notice in their stool something that looks like a tablet.

Manufactured by:

Janssen-Cilag Manufacturing, LLC, State Road 993, KM 0.1, Mamey Ward,  
Gurabo, Puerto Rico 00778-9629, United States of America

Manufactured for (License Holder):

Janssen Pharmaceuticals, Inc., 1125 Trenton-Harbourton Road,  
Titusville, NJ 08560, United states of America

To contact us, please visit our website [www.janssen.com/contact-us](http://www.janssen.com/contact-us)

Revised in: October 2023

دليل علاجي  
كونسيرتا (كون سير-تا)  
(هيدروكلوريد ميثيل الفينيدات)  
أقراص ممتدة المفعول، CII

ما أهم المعلومات التي يجب معرفتها حول كونسيرتا؟

من المحتمل أن يُسبب كونسيرتا آثارًا جانبية خطيرة، من بينها:

- **الإسراف في تناول، وإساءة الاستخدام، والإدمان.** ينطوي كونسيرتا على احتمال كبير للإسراف في تناول وإساءة الاستخدام، وقد يؤدي إلى مشكلات تتعلق بتعاطي المواد، بما في ذلك الإدمان. ويمكن أن تؤدي إساءة استخدام والإسراف في تناول كونسيرتا والأدوية الأخرى التي تحتوي على ميثيل الفينيدات والأدوية التي تحتوي على أمفيتامين، إلى تلقي جرعة زائدة والوفاة. يزداد خطر الجرعة الزائدة والوفاة مع زيادة الجرعات من كونسيرتا أو عند استخدامه بطرق غير معتمدة، مثل الاستنشاق أو الحقن.
  - ينبغي لمقدم الرعاية الصحية التحقق من خطر تعرضك أنت أو طفلك للإسراف في تناول وإساءة الاستخدام والإدمان قبل بدء العلاج بكونسيرتا، وسيقوم بمراقبتك أنت أو طفلك أثناء العلاج.
  - قد يؤدي كونسيرتا إلى الاعتماد الجسدي بعد استخدام مطول، حتى إذا تم تناوله حسب توجيهات مقدم الرعاية الصحية.
  - لا تعط كونسيرتا لأي شخص آخر. انظر قسم "ما هو دواء كونسيرتا؟" للحصول على مزيد من المعلومات.
  - احفظ كونسيرتا في مكان آمن وتخلص بشكل صحيح من أي دواء غير مستخدم. انظر قسم "كيف يجب تخزين كونسيرتا؟" للحصول على مزيد من المعلومات.
  - أبلغ مقدم الرعاية الصحية إذا كنت أنت أو طفلك قد أسرفتما أو كنتما معتمدين على تناول الكحوليات أو الأدوية التي تُصرف بوصفة طبية أو الأدوية المتداولة في الشوارع.
- **المخاطر التي يتعرض لها الأشخاص الذين يعانون من أمراض قلبية خطيرة.** حدثت حالات من الموت المفاجئ لدى الأشخاص الذين يعانون من تشوهات في القلب أو أمراض قلبية خطيرة أخرى.
  - ينبغي لمقدم الرعاية الصحية فحصك أنت أو طفلك بعناية للتأكد من عدم وجود مشاكل بالقلب قبل بدء العلاج بكونسيرتا. أخبر مقدم الرعاية الصحية إذا كنت أنت أو طفلك تعانيان من أي مشاكل بالقلب أو أمراض قلبية أو تشوهات في القلب.
- **اتصل بمقدم الرعاية الصحية أو اذهب إلى أقرب غرفة طوارئ في مستشفى على الفور إذا ظهرت لديك أو لدى طفلك أي علامات على وجود مشاكل بالقلب مثل ألم في الصدر أو ضيق في التنفس أو الإغماء أثناء العلاج باستخدام كونسيرتا.**

● **ارتفاع ضغط الدم ومعدل ضربات القلب.**

ينبغي لمقدم الرعاية الصحية فحص ضغط الدم ومعدل ضربات القلب لديك أو لدى طفلك بانتظام أثناء العلاج بكونسيرتا.

● **مشاكل عقلية (نفسية)، بما في ذلك:**

- سلوك جديد أو تفاقم السلوك أو مشكلات التفكير
  - استحداث مرض ثنائي القطب أو تفاقم المرض
  - أعراض نفسية جديدة (مثل سماع أصوات، أو رؤية أو تصديق أشياء غير حقيقية) أو أعراض هوس جديدة
- أخبر مقدم الرعاية الصحية عن أي مشكلة عقلية لديك أو لدى طفلك وعن تاريخ العائلة في حالات الانتحار أو المرض ثنائي القطب أو الاكتئاب.
- اتصل بمقدم الرعاية الصحية على الفور إذا كانت لديك أو طفلك أعراض أو مشكلات عقلية جديدة أو إذا حدث تفاقم لها أثناء العلاج باستخدام كونسيرتا، وخاصة سماع أصوات أو رؤية أو تصديق أشياء غير حقيقية أو أعراض هوس جديدة.

ما هو دواء كونسيرتا؟

كونسيرتا هو دواء بوصف كمحفز للجهاز العصبي المركزي (CNS)، ويُستخدم لعلاج اضطراب نقص الانتباه وفرط النشاط (ADHD) لدى الأطفال بعمر 6 سنوات وما فوق والبالغين حتى عمر 65 عامًا. قد يساعد كونسيرتا على زيادة الانتباه وتقليل الاندفاع وفرط النشاط عند الأشخاص الذين يعانون من اضطراب نقص الانتباه وفرط النشاط (ADHD).

ليس معروفًا ما إذا كان كونسيرتا آمنًا وفعالًا في حالات الأطفال دون سن 6 سنوات.

لم تتم دراسة كونسيرتا لدى البالغين الذين تزيد أعمارهم عن 65 عامًا.

يعد كونسيرتا مادة خاضعة للرقابة الفيدرالية (CII) لأنه يحتوي على ميثيل الفينيدات الذي يمكن أن يكون هدفًا للأشخاص الذين يسوون استخدام الأدوية التي تُصرف بوصفة طبية أو الأدوية المتداولة في الشوارع. احفظ كونسيرتا في مكان آمن لحمايته من السرقة. لا تقم أبدًا بإعطاء دواء كونسيرتا الخاص بك لأي شخص آخر لأنه قد يتسبب في وفاته أو إلحاق الضرر به. قد يسبب بيع كونسيرتا أو التخلص منه ضررًا للآخرين وهذا مخالف للقانون.

لا تتناول كونسيرتا إذا كنت أنت أو طفلك:

- تعاني من حساسية تجاه **الميثيل الفينيدات** أو أي من المكونات الموجودة في كونسيرتا. انظر إلى نهاية هذا الدليل العلاجي حيث توجد قائمة كاملة بمكونات كونسيرتا.
- تتناول أو توقفت خلال الـ 14 يوماً الماضية عن تناول، دواءً يسمى مثبط أكسيداز أحادي الأمين (MAOI).

**قبل تناول كونسيرتا، أخبر مقدم الرعاية الصحية الخاص بك عن جميع الحالات الطبية التي تعاني منها أنت أو طفلك، بما في ذلك إذا كان لديك أنت أو طفلك:**

- مشاكل في القلب، أمراض القلب، تشوهات في القلب أو ضغط دم مرتفع
- مشاكل عقلية، بما في ذلك الذهان، أو الهوس، أو مرض ثنائي القطب، أو الاكتئاب، أو تاريخ عائلي يتضمن حالات الانتحار أو المرض ثنائي القطب أو الاكتئاب
- أصيبت بنوبات صرع في السابق أو حالياً، أو أجريت اختبار موجات الدماغ (EEG) وكانت النتائج غير طبيعية
- مشكلات في الدورة الدموية في أصابع اليدين والقدمين
- انسداد أو تضيق سابق في الأمعاء
- مشاكل في العين، بما في ذلك ارتفاع ضغط العين، أو الزرق (جلوكوما)، أو مشاكل في الرؤية القريبة (طول النظر)
- لديك أو سبق لك أن تعرضت لحركات أو أصوات متكررة (التشنجات اللاإرادية) أو متلازمة توريت، أو تاريخ عائلي من التشنجات اللاإرادية أو متلازمة توريت
- إذا كنت حاملاً، أو تخططين للإنجاب. ليس معروفاً ما إذا كان كونسيرتا سيُلحق الضرر بالجنين أم لا.
- إذا كنت ترضعين حالياً أو تخططين للإرضاع الطبيعي. ليس معروفاً ما إذا كان كونسيرتا ينتقل في حليب الثدي. تحدثي إلى مقدم الرعاية الصحية الخاص بك حول أفضل طريقة لإطعام الطفل أثناء العلاج بكونسيرتا.

**أخبر مقدم الرعاية الصحية الخاص بك عن كل الأدوية التي تتناولها أنت أو طفلك، بما في ذلك الأدوية التي تُصرف بوصفة أو بدون وصفة طبية والفيتامينات والمكملات العشبية.**

يمكن أن يتفاعل كونسيرتا وبعض الأدوية مع بعضهما مما يسبب آثاراً جانبية خطيرة. وستحتاج جرعات الأدوية الأخرى في بعض الأحيان إلى التعديل أثناء العلاج باستخدام كونسيرتا. سيقدر مقدم الرعاية الصحية الخاص بك ما إذا كان يمكن تناول كونسيرتا مع الأدوية الأخرى

**خاصةً أخبر مقدم الرعاية الصحية الخاص بك إذا كنت أنت أو طفلك تتناول**

- دواء لعلاج ضغط الدم
- مضادات التخثر بواسطة الكومارين (دواء يمنع جلطات الدم، مثل وارفارين)
- دواء لعلاج نوبات الصرع
- دواء لعلاج الاكتئاب
- ريسبيريدون

تعرف على الأدوية التي تتناولها أنت أو طفلك. احتفظ بقائمة بأدويةك أو أدوية طفلك معك لعرضها على مقدم الرعاية الصحية والصيدلي عندما تحصل أنت أو طفلك على دواء جديد.

**لا تبدأ بتناول أي دواء جديد أثناء العلاج باستخدام كونسيرتا دون استشارة مقدم الرعاية الصحية الخاص بك أولاً.**

**كيف يجب تناول كونسيرتا؟**

- تناول كونسيرتا كما هو موصوف بالضبط من قبل مقدم الرعاية الصحية الخاص بك أو بطفلك.
- قد يعدل مقدم الرعاية الصحية الجرعة أو يطلب منك التوقف عن تناول كونسيرتا إذا لزم الأمر.
- تناول كونسيرتا مرة واحدة يوميًا في الصباح مع طعام أو بدونه.
- ابتلع أقراص كونسيرتا بالكامل مع الماء أو سوائل أخرى. **لا تمضغ الأقراص أو تسحقها أو تقسمها.** أخبر مقدم الرعاية الصحية إذا لم تستطع أنت أو طفلك ابتلاع قرص كونسيرتا كاملاً. ربما يتم وصف دواء آخر.
- لا يذوب كونسيرتا بشكل كامل في الجسم بعد إطلاق كل كمية الدواء. قد تلاحظ أنت أو طفلك في بعض الأحيان قرصاً فارغاً في حركة الأمعاء. هذا طبيعي.
- قد يقوم مقدم الرعاية الصحية بإجراء اختبارات دم أثناء العلاج باستخدام كونسيرتا للتحقق من تعداد دمك أو طفلك.

إذا تناولت أنت أو طفلك كمية كبيرة من كونسيرتا، فاتصل بمقدم الرعاية الصحية أو اذهب إلى أقرب غرفة طوارئ في مستشفى على الفور.

**يحتوي كونسيرتا® على اللاكتوز**

يحتوي هذا الدواء على اللاكتوز (نوع من السكر). إذا أخبرك طبيبك أن لديك أو لدى طفلك عدم تحمل لبعض السكريات، فتواصل مع طبيبك قبل تناول هذا الدواء.

#### ما الآثار الجانبية المحتملة لكونسيرتا؟

من المحتمل أن يُسبب كونسيرتا آثارًا جانبية خطيرة، من بينها:

- انظر إلى "ما أهم المعلومات التي يجب معرفتها حول كونسيرتا؟"
  - نوبات صرع. سيقوم مقدم الرعاية الصحية بإيقاف العلاج بكونسيرتا إذا تعرضت أنت أو طفلك لنوبة صرع.
  - انتصابات مؤلمة ومستمرة (البريبيسم) حدوث البريبيسم الذي قد يتطلب إجراء عملية جراحية لدى الأشخاص الذين يتناولون منتجات تحتوي على ميثيل الفينيدات . إذا حدث لك ولطفلك حالات بريبيسم، احصلوا على المساعدة الطبية فورًا
  - مشكلات في الدورة الدموية في أصابع اليدين والقدمين (اضطراب الأوعية الدموية الطرفية، يشمل ظاهرة رينو). قد تشمل العلامات والأعراض ما يلي:
    - الشعور بالتمميل والبرد والألم في أصابع اليدين أو القدمين
    - تغير لون أصابع اليدين أو القدمين من اللون الشاحب إلى الأزرق إلى الأحمر
  - أخبر مقدم الرعاية الصحية إذا كان لديك أو طفلك أي شعور بالتمميل أو ألم أو تغير في لون الجلد أو حساسية تجاه درجة الحرارة في أصابع اليدين أو القدمين. اتصل بمقدم الرعاية الصحية على الفور إذا كانت لديك أو لدى طفلك أي علامات لجروح غير مبررة تظهر على أصابع اليدين أو القدمين أثناء العلاج باستخدام كونسيرتا.
  - بطء النمو عند الأطفال (الطول والوزن). ينبغي فحص طول الأطفال ووزنهم كثيرًا أثناء العلاج باستخدام كونسيرتا. قد يتم إيقاف علاج كونسيرتا إذا كان طفلك لا ينمو أو يكتسب الوزن وفق النحو المتوقع.
  - مشاكل في العين (ارتفاع الضغط في العين والجلوكوما). اتصل بمقدم الرعاية الصحية على الفور إذا طرأت عليك أنت أو طفلك تغيرات في الرؤية أو ألم في العين أو تورم أو احمرار.
  - التشنجات اللاإرادية الجديدة أو المتفاقمة أو تفاقم متلازمة توريت. أخبر مقدم الرعاية الصحية إذا أصبت أنت أو طفلك بأي تشنجات لاإرادية جديدة أو متفاقمة أو تفاقم متلازمة توريت أثناء العلاج باستخدام كونسيرتا.
  - تغيرات في الرؤية أو عدم وضوح الرؤية.
  - انسداد محتمل في الأمعاء. نظرًا لأن قرص كونسيرتا لا يتغير شكله في الأمعاء (الجهاز الهضمي)، فلا ينبغي تناول كونسيرتا من قبل الأشخاص الذين يعانون من مشاكل شديدة في الأمعاء (تضيق شديد في الجهاز الهضمي موجود مسبقًا).
- الأثر الجانبي الأكثر شيوعًا لكونسيرتا عند الأطفال هو ألم منطقة المعدة العلوية (البطن).

تشمل الآثار الجانبية الأكثر شيوعًا لكونسيرتا لدى البالغين ما يلي:

- انخفاض الشهية
- الصداع
- جفاف الفم
- الغثيان
- اضطراب النوم
- التوتر
- الدوخة
- فقدان الوزن
- التهيج
- زيادة التعرق

هذه ليست جميع الآثار الجانبية المحتملة لكونسيرتا.

اتصل بالطبيب للحصول على النصيحة الطبية حول الآثار الجانبية.

#### كيف يجب تخزين كونسيرتا؟

يحفظ في درجة حرارة لا تتجاوز 30 درجة مئوية و بعيداً عن الرطوبة.

مدة الصلاحية: انظر العبوة الخارجية.

- قم بتخزين كونسيرتا في مكان آمن، مثل خزانة مقفلة.
- تخلص من دواء كونسيرتا المتبقي أو غير المستخدم أو منتهي الصلاحية من خلال برنامج لاستعادة الأدوية في موقع تجميع معتمد من إدارة مكافحة المخدرات الأمريكية (DEA). وفي حالة عدم توفر برنامج استعادة أو موقع تجميع معتمد من إدارة مكافحة المخدرات (DEA)، قم بخلط كونسيرتا مع مادة غير سامة وغير مرغوب فيها مثل الأتربة أو فضلات القطط أو القهوة المطحونة المستخدمة لجعله أقل جاذبية للأطفال والحيوانات الأليفة. ضع الخليط في حاوية مثل كيس بلاستيكي محكم الغلق، ثم ألق كونسيرتا في سلة المهملات المنزلية. قم بزيارة الرابط [www.fda.gov/drugdisposal](http://www.fda.gov/drugdisposal) للحصول على معلومات إضافية حول التخلص من الأدوية غير المستخدمة.
- احفظ كونسيرتا وجميع الأدوية بعيدًا عن متناول الأطفال.

#### معلومات عامة حول الاستخدام الآمن والفعال لكونسيرتا.

توصف الأدوية في بعض الأحيان لأغراض أخرى غير المذكورة في الدليل العلاجي. لا تتناول كونسيرتا لحالة لم يوصف لها. لا تعط كونسيرتا لأشخاص آخرين، حتى إذا كانت لديهم نفس الحالة. قد يسبب ذلك لهم ضررًا كما أنه مخالف للقانون.

يمكنك أن تطلب من مقدم الرعاية الصحية أو الصيدلي الحصول على معلومات كونسيرتا الموجهة إلى أخصائيي الرعاية الصحية.

## ما مكونات كونسيرتا؟

**المكون الفعّال:** هيدروكلوريد ميثيل الفينيدات

**المكونات غير الفعّال:** بوتيلاند هيدروكسي تولوين، شمع الكارنوبا، أسيتات السليلوز، هيبروميلوز، لاکتوز، حمض الفوسفوريك، بولوكسامير، بولي إيثيلين جليكول، أكاسيد البولي إيثيلين، بوفيدون، بروبيلين غليكول، كلوريد الصوديوم، حمض الستياريك، حمض السكسينيك، أكاسيد الحديد الاصطناعية، ثاني أكسيد التيتانيوم، تري أسيتين.

## شكل كونسيرتا ومحتويات العبوة:

أقراص ممتدة المفعول

أقراص 18 مجم: أقراص صفراء على شكل كبسولة مطبوع على أحد جانبيها "alza 18" بالحبر الأسود. يحتوي كل قرص على 18 مجم من هيدروكلوريد ميثيل الفينيدات.

أقراص 27 مجم: أقراص رمادية على شكل كبسولة مطبوع على أحد جانبيها "alza 27" بالحبر الأسود. يحتوي كل قرص على 27 مجم من هيدروكلوريد ميثيل الفينيدات.

أقراص 36 مجم: أقراص بيضاء على شكل كبسولة مطبوع على أحد جانبيها "alza 36" بالحبر الأسود. يحتوي كل قرص على 36 مجم من هيدروكلوريد ميثيل الفينيدات.

أقراص 54 مجم: أقراص حمراء ضاربة إلى اللون البني على شكل كبسولة مطبوع على أحد جانبيها "alza 54" بالحبر الأسود. يحتوي كل قرص على 54 مجم من هيدروكلوريد ميثيل الفينيدات.

## طبيعة ومحتويات العبوة

كونسيرتا® متاح في شكل زجاجات من البولي إيثيلين عالي الكثافة (HDPE). تحتوي كل زجاجة من البولي إيثيلين عالي الكثافة على 30 أو 100 قرص ومادة مجففة.

قد لا يتم تسويق جميع تركيزات أو أحجام العبوات.

## حامل الرخصة التسويقية:

جانسن فارماسيوتيكلز - 1125 ترنتون - هاربرتون رود-تيتوسفيل- نيوجيرسي 08560 الولايات المتحدة الأمريكية

## الشركة المصنّعة:

جانسن سيلاج مانيفكتشرينج - ل ل سي ستات رود-كم 0.1 مامي وارد جاربو- بورتو ريكو 9629-00778، الولايات المتحدة الأمريكية

تمت المراجعة في: أكتوبر 2023.

للاتصال بنا، يُرجى الانتقال إلى الصفحة [www.janssen.com/contact-us](http://www.janssen.com/contact-us)

© 2008 جانسن فارماسيوتيكلز

هذا الدليل العلاجي معتمد من قبل إدارة الأدوية والأغذية الأمريكية

### هذا مستحضر دوائي

- الدواء منتج يؤثر في صحتك، واستهلاكه خلافًا للتعليمات يعرضك للخطر.
- اتبع بدقة وصفة الطبيب وطريقة الاستعمال وتعليمات الصيدلي الذي صرف الدواء لك. إن الطبيب والصيدلي خبيران بالمستحضرات الدوائية وينفعها وضررها.
- لا تقطع مدة العلاج المحددة من تلقاء نفسك.
- لا تكرر الوصفة الطبية ذاتها دون استشارة طبيبك.
- احفظ جميع الأدوية بعيدًا عن متناول الأطفال

مجلس وزراء الصحة العرب، اتحاد الصيادلة العرب